

BOSE[®]



LIFESTYLE[®] ROOMMATE[®]

POWERED SPEAKER SYSTEM

Owner's Guide | Guía de usuario | Notice d'utilisation

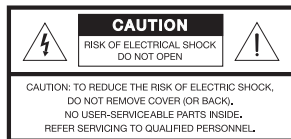
SAFETY INFORMATION

Please read this owner's guide

Please take the time to carefully follow the instructions in this owner's guide. It will help you set up and operate your system properly and enjoy all of its advanced features. Please save this owner's guide for future reference.

WARNINGS:

- To reduce the risk of fire or electrical shock, do not expose the product to rain or moisture.
- Do not expose the apparatus to dripping or splashing, and do not place objects filled with liquids, such as vases, on or near the apparatus. As with any electronic product, use care not to spill liquids into any part of the system. Liquids can cause a failure and/or a fire hazard.
- No naked flame sources, such as lighted candles, should be placed on the apparatus.



The lightning flash with arrowhead symbol, within an equilateral triangle, alerts the user to the presence of uninsulated dangerous voltage within the system enclosure that may be of sufficient magnitude to constitute a risk of electric shock.



The exclamation point within an equilateral triangle alerts the user to the presence of important operating and maintenance instructions in this owner's guide.

NOTES:

- The product label is located on the bottom of the product.
- This product is intended to be used only with the power supply provided.
- Where the mains plug or appliance coupler is used as the disconnect device, such disconnect device shall remain readily operable.
- This product must be used indoors. It is neither designed nor tested for use outdoors, in recreation vehicles, or on boats.
- Unauthorized modification of the radio remote control could void the user's authority to operate this equipment.



This product conforms to all EU Directive requirements as applicable by law. The complete Declaration of Conformity can be found at www.Bose.com/compliance.

Additional safety information

See the additional instructions on the **Important Safety Instructions** sheet (North America only) enclosed in the shipping carton.

For your records

Please record the serial number of your RoomMate® speaker here and on your Product Registration Card.

Serial number: _____

Dealer name: _____

Dealer phone: _____

Purchase date: _____

INTRODUCING THE ROOMMATE® POWERED SPEAKER

Before you begin

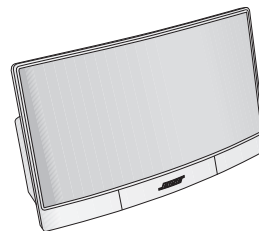
Thank you for purchasing a LIFESTYLE® RoomMate® powered speaker system, a small speaker system that delivers surprisingly great sound. This speaker system provides a simple and elegant solution for enjoying the sound from your LIFESTYLE® home entertainment system in your living room, kitchen, bedroom or any other room in your home.

An AUX IN jack on the rear panel allows you to listen to an external audio device through this remarkable speaker, even if it is disconnected from your home entertainment system.

Unpacking

Check the carton for all of the parts shown and save the carton and packing materials. The original packing materials provide the safest way to transport this product.

If any part of the product appears to be damaged, do not attempt to use it. Contact your authorized Bose dealer immediately or call Bose Customer Service. Refer to the address list enclosed in the carton for phone numbers.



□ RoomMate speaker



□ Power pack



□ Power cord



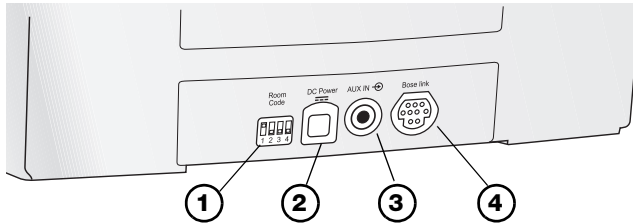
□ 50-ft Bose® link B cable

Note: Now is a good time to find the serial number on the bottom of your RoomMate speaker and record it on page ii.

INTRODUCING THE ROOMMATE® POWERED SPEAKER

Rear panel features

The rear panel provides a power connector, audio input connectors, and room code switches.

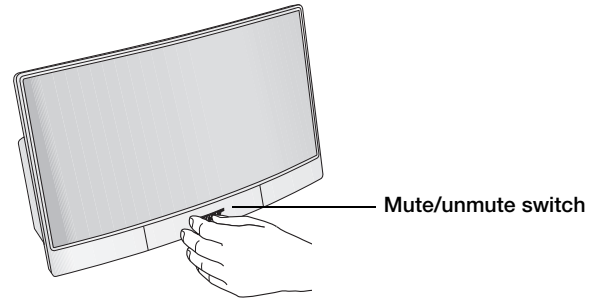


- 1 Room Code** – Four miniature switches used to set the room code. See “Checking the room code” on page 4.
- 2 DC Power** – A DC power input jack which accepts the power pack output cable.
- 3 AUX IN** – A 3.5 mm stereo input jack for connecting an external audio source (local source).
- 4 Bose® link** – A multi-pin jack for connecting your speaker to a LIFESTYLE® system Bose link network.

Front panel mute switch

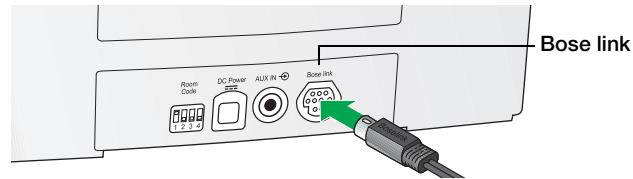
The bottom front center of the speaker enclosure contains a touch-sensitive mute switch.

To mute or unmute the speaker, just touch the Bose logo.

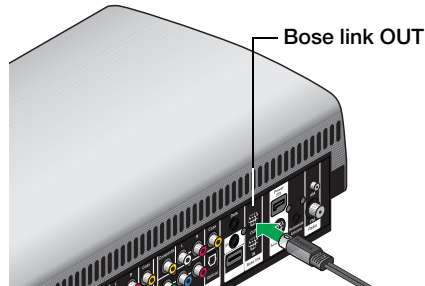


Connecting the RoomMate® speaker to your system

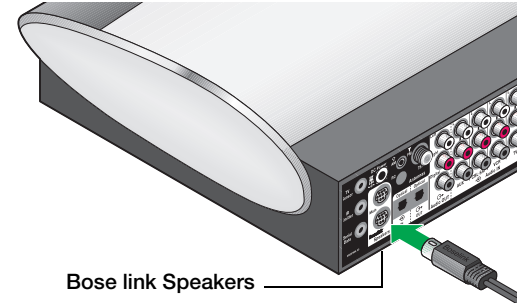
1. Plug one end of the supplied Bose® link B cable into the **Bose link** connector on the speaker.



2. Plug the other end of the cable into your system.
 - A. For a LIFESTYLE V25/V35 system plug the Bose link cable into the **Bose link OUT** connector.



- B. For other LIFESTYLE systems plug the Bose link cable into the **Bose link Speakers** connector.



Bose® link extension cable

If you already have a Bose® link cable plugged into your LIFESTYLE system, a Bose link extension/expansion cable will enable you to connect both your existing Bose link cable and your new Bose link B cable to your system.

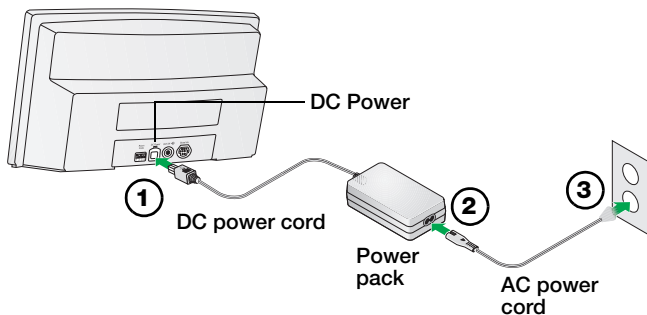
Alternatively, you can purchase an AL8 Homewide Wireless Audio Link to provide wireless communication to both your existing Bose link product and your new LIFESTYLE® RoomMate speaker system.

For more information, contact Bose Customer Service. Refer to the contact list included with your LIFESTYLE® system.

SETUP

Making the power connections

1. Insert the plug (label facing up) of the DC power cord into the **DC Power** connector.
2. Insert the small plug of the AC power cord into the power pack.
3. Plug the other end of the AC power cord into a live AC (mains) outlet.



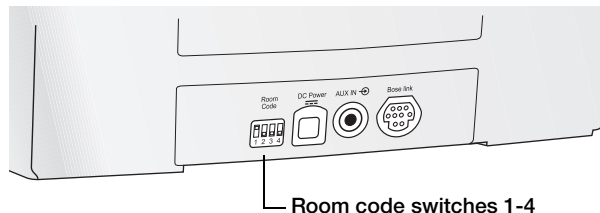
Checking the room code

The RoomMate® speaker and the remote control used with it must have the same room code. Your RoomMate® speaker is shipped from the factory set up to operate using room code 1. See the owner's guide that came with the remote for instructions on changing the room code.

If room code 1 is already used by another Bose® link product in your home, you will need to set the speaker to a different room code.

To change the room code in the RoomMate speaker:

1. Find the room code switches on the rear panel.



2. Using a fine-point pen or other small tool, set switches 1 through 4 to the corresponding up and down positions shown for that room code in the following table.

Room Code	1	2	3	4
B				
C				
D				
E				
F				
G				
H				
I				
J				
K				
L				
M				
N				
O				

Checking the house code

In order to operate your main room system using a second room remote, the remote and your main room system must have the same house code.

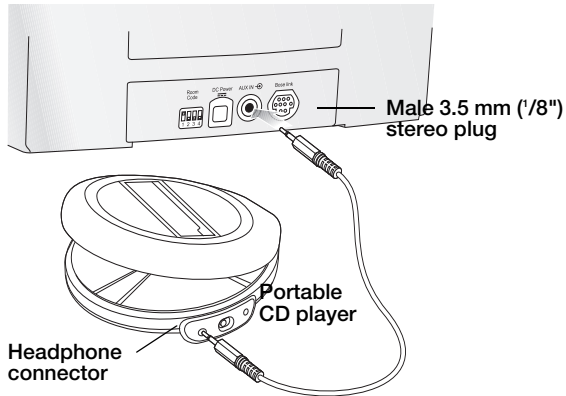
To check the house code setting and learn how to change it, see the owners guide for your main system and the remote that you are planning to use in the other room.

A LIFESTYLE® system radio frequency (RF) remote has a long range and the ability to penetrate walls. Therefore, the signals from a remote in one home can possibly reach and affect the operation of a LIFESTYLE® system in another. Changing the house code for the system and all the remotes used with it avoids possible conflict.

SETUP

Connecting an audio device

You can use your RoomMate® speaker to listen to an external audio device such as a TV, or a portable CD or MP3 player. Just plug the output cable from your device into the AUX IN connector on the rear panel of your speaker. The cable must be equipped with a male 3.5 mm (1/8") stereo plug.



Note: Your Bose® second room remote control will not operate any audio device connected to the AUX IN connector.

Listening to a connected audio device

The device that is connected to AUX IN is identified by your LIFESTYLE system as a Local source.

Using a PERSONAL® music center II:

1. Turn on your connected device.
2. Press the **Source** button.
3. Select **Local** and press **[OK]**.
4. To operate your connected device, use the controls on the device or the remote control that came with it.

Using a RC-35S2 remote control:

1. Turn on your connected device and start playing a track.
2. Press the **OTHER** button to select the Local Source. Keep pressing the **OTHER** button until you hear your device.

Using AUX IN with no Bose® link connection

When your RoomMate® speaker is disconnected from your Bose link network, the AUX IN input is automatically selected. This means that you can listen to a connected audio device without using your main room system. Use the volume control on your external device to set the volume level of the speaker. You can still use the mute switch on the front of the speaker to mute the audio at any time.

Troubleshooting

Problem	What to do
No sound	<ul style="list-style-type: none"> • Make sure the RoomMate® speaker is plugged in and the Bose® link cable is connected. • Make sure you select a source on the second room remote. • Increase the system volume. • Press Mute on the second room remote. • Touch the mute switch on the RoomMate® speaker. • Make sure the house code setting in your second room remote matches the house code your main room system. • Make sure the RoomMate speaker and the remote used with it have the same room code setting.
Intermittent response from the LIFESTYLE® system to commands from the second room remote	<ul style="list-style-type: none"> • It could be time to change batteries in the remote control. • Move the zone 2 remote to see if the problem is caused by “dead spots” in the building. • You may need an antenna extender, which is described in the LIFESTYLE® installation guide.
Your system turns on or off unexpectedly or other tuning changes occur when no buttons on the zone 2 remote have been pressed	<ul style="list-style-type: none"> • Check to see if someone in the main room is using the primary remote and is experiencing the same problem. If not, you may be experiencing a control conflict with another nearby LIFESTYLE® system. Changing the house code may solve the problem. • Refer to the owner’s guide that came with the remote for details on how to change the house code.
Cannot hear my external source	<ul style="list-style-type: none"> • Make sure cable from the external device is connected to the AUX IN jack. • Make sure the external device is turned on. • Turn up the volume on the external device.

CARE AND MAINTENANCE

Cleaning

To clean your RoomMate® powered speaker, wipe the enclosure using a soft dry cloth. You can also lightly vacuum the grille on the speaker.

- DO NOT use solvents, chemicals, or sprays.
- DO NOT allow liquids to spill or objects to drop into any openings.

Contacting customer service

For additional help in solving problems, contact Bose® Customer Service. See the address and phone number list included with your LIFESTYLE® system.

Limited warranty

Your RoomMate® powered speaker is covered by a limited warranty. Details of the limited warranty are provided on the product registration card that is included in the carton. Please refer to the card for instructions on how to register. Failure to do so will not affect your limited warranty rights.

What you must do to obtain Limited Warranty Service:

Return product, with proof of purchase from an authorized Bose dealer, using the following procedures:

1. Contact the Bose organization in your country/region (visit **Global.Bose.com/register** for Bose contact information in your country/region) for specific return and shipping instructions;
2. Label and ship the product, freight prepaid, to the address provided by the Bose organization in your country; and
3. Place any necessary return authorization number prominently on the outside of the carton. Cartons not bearing a return authorization number, where required, will be refused.

Technical information

Dimensions

6.65" H x 11.91" W x 4.68" D
(16.89 cm x 30.26 cm x 11.88 cm)

Weight

4.45 lb (2.02 kg)

Power rating

100-240V \sim 50-60Hz, 1.5A-0.8A, 64-77VA



325310-0010

BOSE[®]
Better sound through research[®]

©2010 Bose Corporation, The Mountain,
Framingham, MA 01701-9168 USA
AM325310 Rev.00